



BricsCAD Licensing Options, Standalone & Network Installation Guide (Versions 21, 22)



Table of Contents

[Select the Product Edition](#)

- Select the License
- Understanding the License
- The Licenses
- License Options

[Installation Options](#)

- Interactive Installation
- Silent Installation
- Activating a Single or Volume License (Online)
- Activating a Network License Automatically
- Using a Network License on a Client Computer
- Roaming a Network License on a Client Computer
- Returning a Roamed Network License on a Client Computer

[Proxy Settings](#)

- Configuring Proxy Settings
- Configuring Proxy Settings permanently for Network License use

[Network License Server](#)

- Setting up a Windows Network License Server
- Installing the Bricsys Network License Manager
- New Installation of the Bricsys Network License Manager
- Upgrading the Bricsys Network License Manager
- Installation from the Command Line
- Starting the Network License Server

[Network License Server Administration](#)

- Opening the Web Interface
- Checking the License and Server Status
- Rereading the License/Restarting the Server
- Creating the Failover License File

[License Pooling](#)

- Editing the Options
- Commonly Used Options
- Identifying the License File
- License Pooling by RLM_Project

[Advanced Configurations](#)

- Antivirus
- Firewall
- Roaming

[Setting Up a Linux Network License Server](#)

[Managing BricsCAD Licenses with Multiple Bricsys Accounts](#)

- Modifying a BricsCAD License
- Deactivating or Revoking a BricsCAD License
- Deactivating a License
- Revoking a License

[Migrating a License to Another Computer](#)

[Migrating a Network License to Another Server](#)

[Activating BricsCAD Communicator](#)

- Use Communicator System Variable

[Find Additional Support/Contact BricsCAD](#)



Select the BricsCAD® Product Edition

There are 5 product editions for BricsCAD®:

BricsCAD® Lite

If you only create general 2D designs, the BricsCAD® Lite may be right for you. Compared to AutoCAD® LT, it also allows users to view and manipulate 3D models and run Lisp routines. LISP allows BricsCAD® users to load customized routines or small applications that will run inside BricsCAD®.

BricsCAD® Pro

BricsCAD® Pro includes direct 3D modeling with a full 3D constraint system, rendering with materials and lighting, and access to third-party applications.

BricsCAD® BIM

BricsCAD® BIM license includes all BricsCAD® Pro features. You can use your current CAD skills to smoothly move to create real Building Information Models in record time. One product, one workflow, all in industry-standard DWG.

BricsCAD® Mechanical

On top of all BricsCAD® Pro features, BricsCAD® Mechanical includes a complete mechanical design toolkit, all in industry-standard DWG, including sheet metal functionality. BricsCAD® Communicator module imports files from, and exports files to, industry-standard Mechanical CAD formats, including associated Product Manufacturing Information, or PMI.

BricsCAD® Ultimate

BricsCAD® Ultimate combines the BricsCAD® BIM and BricsCAD® Mechanical features in one single DWG-based platform.

Discover which BricsCAD edition is best suited to your needs by analyzing the [feature comparison](#) and [comparing editions](#).

Select the License

Think about how many of each product edition you need and if those editions will be shared amongst a pool of networked users. You can now make licensing decisions following these basic rules:

- If you do not need shared licenses then purchase single seat or volume perpetual licenses (runs as long as you like, with All-In Maintenance to stay up to date with the latest releases) or single seat subscriptions (annual rental).
- If you do need to share licenses across multiple users, workgroups, or locations, it's recommended that you purchase network perpetual or network subscriptions.

You can mix and match as many product editions and license types as you like. Unlike cloud-based or subscription-licensed-only CAD tools, **BricsCAD® lets you decide what to buy, based on your true needs.**

Understanding the License

Unlike subscription-only CAD tools, BricsCAD® supports a variety of license types. This allows your company to choose the mix of licenses that make the most sense (and offer the best cost structure) for your needs. Here are brief definitions of each type of BricsCAD® license:

The Licenses

There are 2 license types for BricsCAD®:

- Perpetual license
- Rental license (subscription)



License Options

Perpetual License:

When you purchase a perpetual license, you own the software. BricsCAD® editions run on Microsoft Windows, macOS, and Linux.

There are 2 maintenance options:

1. The All-In Maintenance option includes automatic upgrades and support. An annual support contract that assures you always have the latest minor and major versions of BricsCAD®, and access to priority, email-based tech support. For additional maintenance information: <https://www.bricsys.com/en-intl/maintenance>
2. You can purchase upgrades at your discretion.

Rental License (Subscription)

When you choose the rental option, you have access to the latest version of BricsCAD® for either 1 or 3-year packages. It includes Priority Support and access to all new versions that are released during the time your subscription is active.

Single-User License

The single-user license agreement is for a single user installation. Each single-user license allows two activations. You can install it on two machines, for example on a workstation in the office and on a laptop in the field. However, *only one license can be in use at any one time*. Single-user licensing is available for perpetual or rental licensing. Student licenses are always single-user.

Volume License

The volume licensing agreement allows you to use BricsCAD® within a defined user base. You can install the software using a single license key valid for each user. The volume license option is available for both perpetual or rental licensing and includes a one-year maintenance contract. It is the default for institutional academic licenses.

Network License

The network licensing agreement enables multiple users to access BricsCAD® within a LAN (Local Area Network). The number of available network licenses defines the number of users who can concurrently use the software. The network license option is available for both perpetual or rental licensing and includes a one-year maintenance contract. Network licensing is also available to institutions that use an academic license.

- **BricsCAD comes as a single download file for all product editions, including BricsCAD Shape.**
- **When you install a new BricsCAD version for the first time, you can run a 30-day trial mode first.**
- **You can install each new major version next to a previous major version.**

Click on Link for: [Academic License Installation](#)



Installation Options

The following describe the multiple approaches available when installing BricsCAD.

Interactive Installation

In the case of a normal (non-silent) installation, the user provides the necessary installation input via dialog boxes.

The user interface of Windows Installer queries the target system and displays Setup Wizard. Setup Wizard enables the user to change various options that affect the installation.

1. Double click the installer file.
2. Click **Next**.
3. Select the check box to accept the License Agreement.
4. Click **Next**.
5. Do one of the following:
 - Accept the default installation folder.
 - Click the **Change...** button and select an installation folder.
6. Click **Next**.
7. Click **Install** to start the installation.
8. Choose whether or not to add a shortcut on the desktop and/or to display the release notes when the installation process has finished.
9. Click **Next**.
10. Click **Finish** to finish the installation process.

BricsCAD is installed.

Silent Installation

In case of a silent or quiet installation, the Setup Wizard user interface is disabled and the actions during the user interface sequence are not performed.

For silent installation, you need admin rights.

1. Open **PowerShell** or **Command Prompt** and change the directory (cd) to the location of the **BricsCAD®** installer .msi file.
Note: In Windows 10, you can access the **Open PowerShell window here** context menu when you shift- right-click a folder in **Explorer**. This allows you to open PowerShell in the current window without having to change the directory.
2. Type **msiexec /i** and do one of the following:
 - Type the file name of the BricsCAD installer (e.g. BricsCAD-V22.1.04-1-en_US(x64).msi).
 - Drag the BricsCAD installer file from the Windows Explorer dialog to the command window.
3. Type **/qn** at the command prompt.
4. (option) Add **ADDDESKTOPSHORTCUT=""** to suppress the addition of a desktop shortcut.
5. (option) Add **SHOWRELEASENOTES=""** to suppress the display of the Release Notes when the installation completes.
6. (option) Add **APPLICATIONFOLDER="your_app_folder"** to install BricsCAD in a custom folder.
7. (option) Add **BRXLICENSEDESTFILE="path_to_lic_file"** to specify a folder for the license file if any of the properties **BRXLICENSEKEY**, **BRXLICENSEFILE** or **BRXLICENSESERVER** are defined.

Default is **APPLICATIONFOLDER\BricsCAD.lic**.



8. (option) Add **BRXLICENSEKEY="your_license_key"** to activate the license and store it in the folder specified by **BRXLICENSEDESTFILE**.
9. (option) Add **BRXLICENSEFILE="your_license_file"** to copy the license file to the folder specified by **BRXLICENSEDESTFILE**.
10. (option) Add **BRXLICENSESERVER="host"**, or **BRXLICENSESERVER="port@host"** (*) to create a license file in the folder specified by **BRXLICENSEDESTFILE**, containing the server host specification.
11. (*) If your license server is using a different port than default port 5053.
12. (option on 32 BIT only) Add **INSTALLVBA="0"** or **INSTALLVBA=""** to not install VBA.

The complete entry in the command prompt can be: **msiexec /i "BricsCAD-Vxx.x.xx-x-en_US(x64).msi" /qn ADDDESKTOPSHORTCUT="" SHOWRELEASENOTES=""**.

13. Press **Enter** to launch the installation.

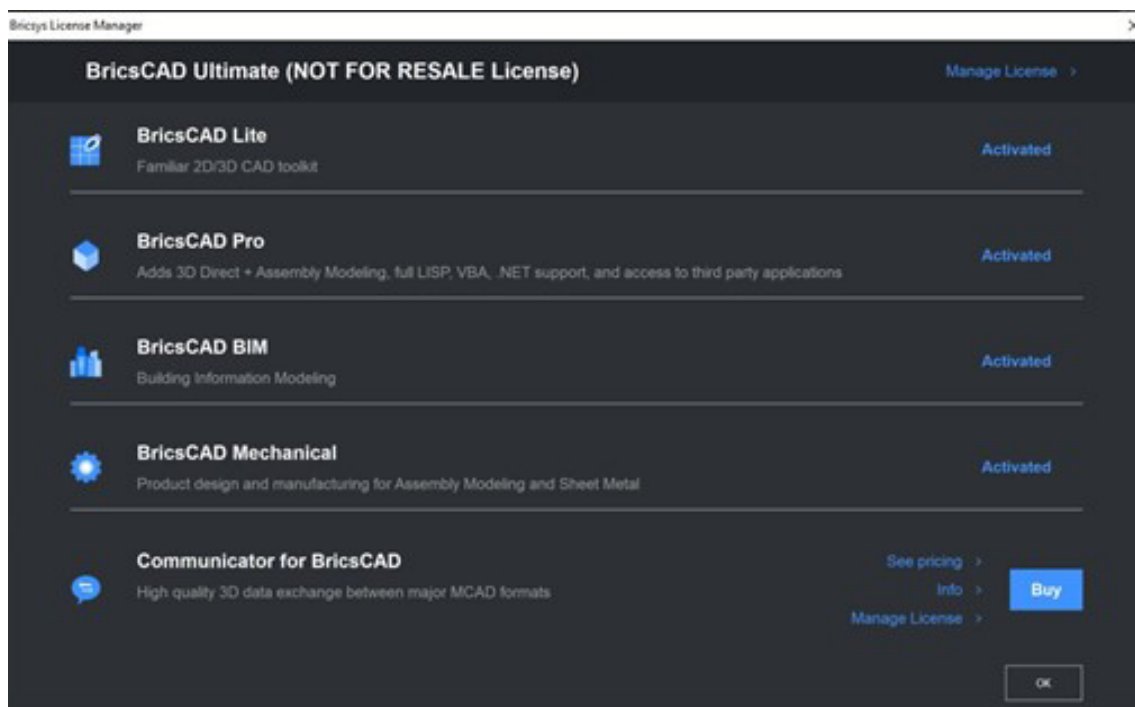
Notes:

- For more options, type: **msiexec /?** at the command prompt.
- On the Microsoft website, you can find [more information](#) about the **msiexec** command.

[Activating a Single or Volume License Automatically \(online\)](#)

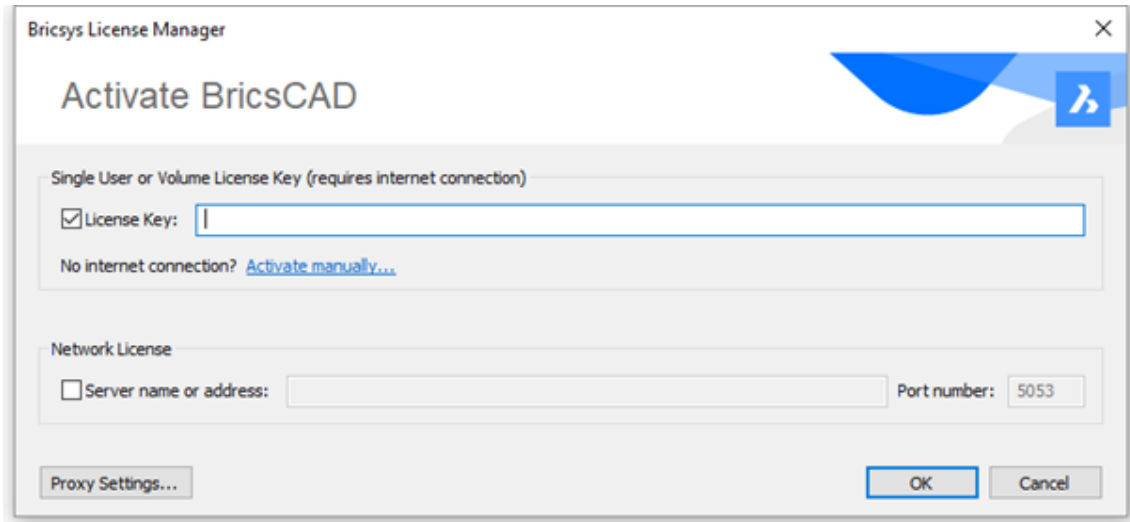
The BricsCAD license activation requires an internet connection.

1. Launch BricsCAD.
- Note:** When your trial period has expired, click **Activate License** on the **BricsCAD Launcher** dialog box, then go to step 5.
2. Launch the [LICENSEMANAGER](#) command. The **Bricsys License Manager** dialog displays.





3. Click **Manage License**.
The **Licensing Information** dialog displays.
4. Click the **Modify** button.
The **BricsCAD License Manager - Activate BricsCAD** dialog box displays:



5. Paste your license key in the **License Key** field.
6. Click the **OK** button.
 - Your license key is registered over the internet.
 - A dialog displays when the license key is successfully activated.
7. Read the text on the dialog box and click the **I understand** button.

Click on Link for: [Activating a single or volume license manually \(offline\)](#)



Activating a Network License Automatically (online)

The BricsCAD license activation requires an internet connection.

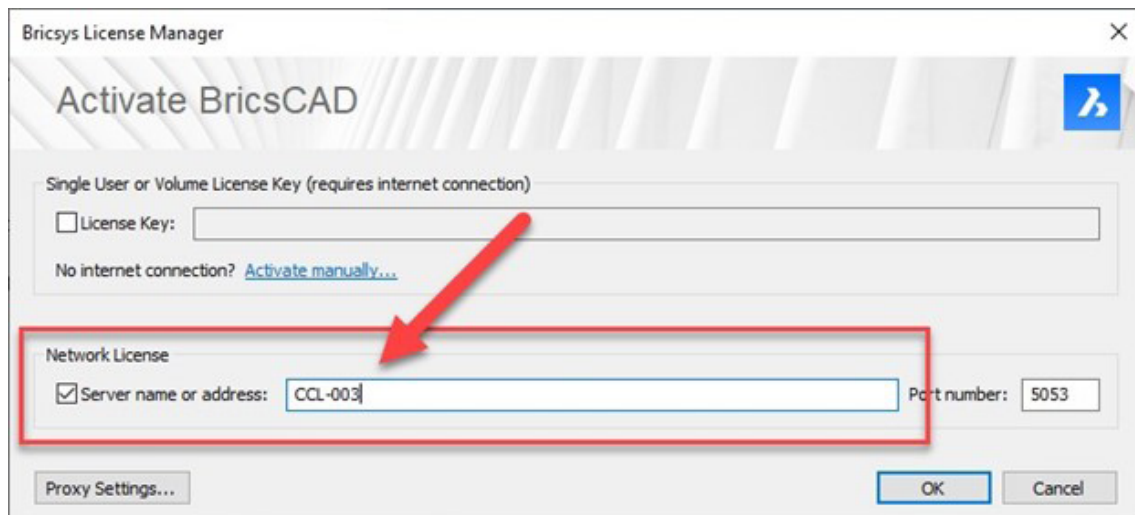
1. Click the **License activation** shortcut in the operating system Start menu.
The **Bricsys License Manager - Activate Network License** dialog box opens.
2. Enter the new network license in the **License Key** field and click **OK**.
3. Click the **License server administration** shortcut in the operating system **Start** menu to open the **Reprise License Server Administration**.
4. Click the **Reread/Restart Servers** option in the left menu.

Click on Link for: [Activating a network license manually \(offline\)](#)

Using a Network License on a Client Computer

Once the Network license is activated on the license server, it can be used on client computers.

1. Do one of the following:
 - If you start BricsCAD for the first time, click the **Activate License** button in the [BricsCAD Launcher](#) dialog box.
 - If you replace or upgrade an existing license, launch the [LICENSEMANAGER](#) command, then click **Manage License** and click the **Modify...** button.
2. Check the **Network License** option in the **Activate BricsCAD** dialog box.
3. Type the host name or IP address of the license server in the **Server name or address** field.

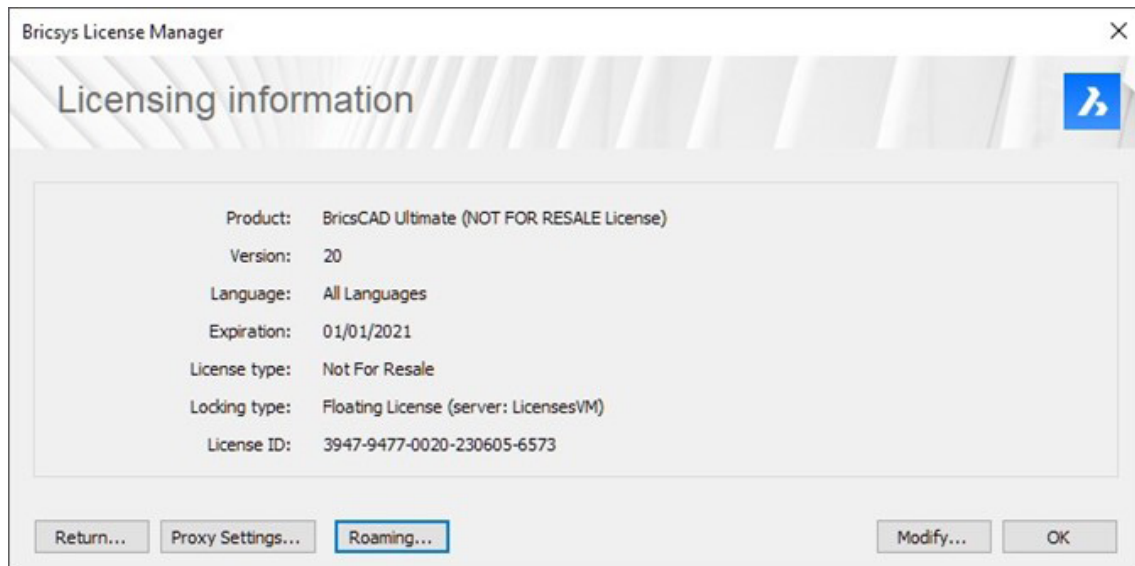


4. (optional) Type the port number in the **Port Number** field.
5. If your computer is connected to the license server through a proxy server, click the [Proxy Settings](#) button to configure the proxy settings for a network license.
6. Click the **OK** button.

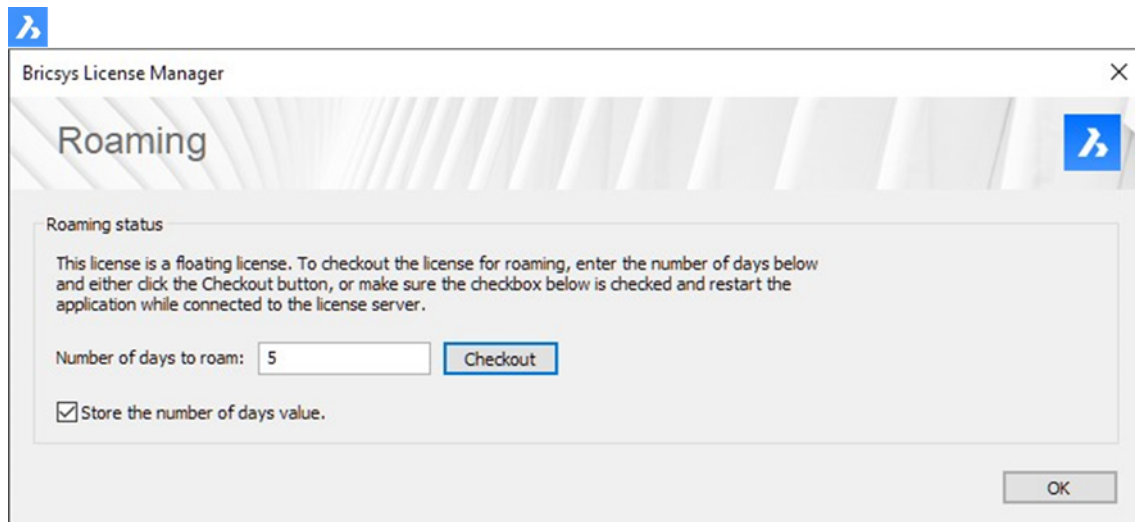


Roaming a Network License on a Client Computer

A network license can be roamed to use BricsCAD without connection to the license server (work outside of the office, at home, ...). When a network license is used on a client computer, the **Roaming...** button is displayed in the [Licensing Information](#) dialog box.



1. If your computer is connected to the license server through a proxy server, click the Proxy Settings button to configure the [proxy settings](#) for a network license.
2. Click the **Roaming...** button.
The **Roaming** dialog box opens.



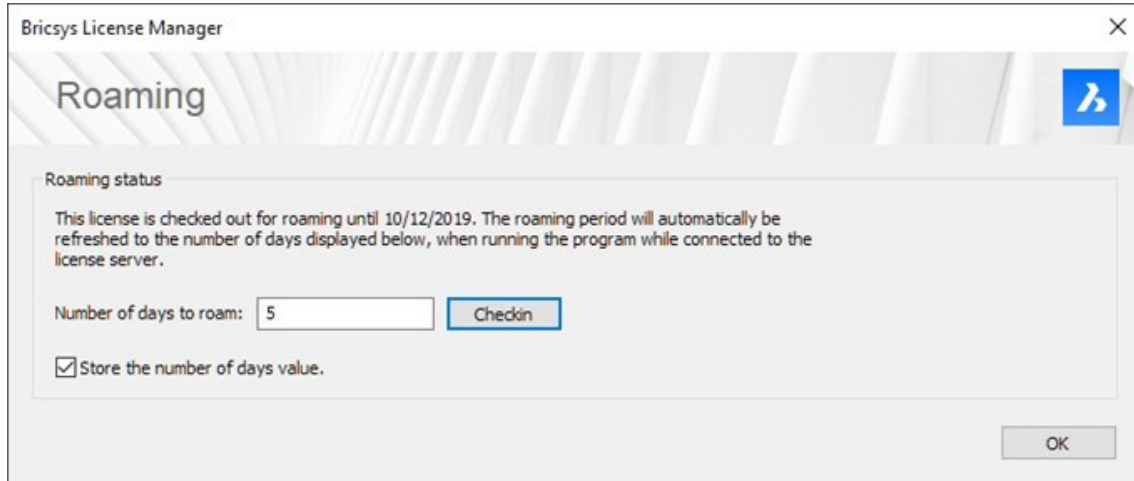
3. Enter the number of days you want to check out the license for roaming and click the **Checkout** button.
4. (Optional) Select the check box if you want to automatically refresh the roaming period whenever your computer is connected to the server.
5. Restart BricsCAD to apply the changes.



Returning a Roamed Network License on a Client Computer

If you are connected to the license server, you can return a roamed license to the server.

1. Click the **Roaming...** button in the [Licensing Information](#) dialog box.
The **Roaming** dialog box opens.



2. Click the **Checkin** button.
3. Restart BricsCAD to apply the changes.

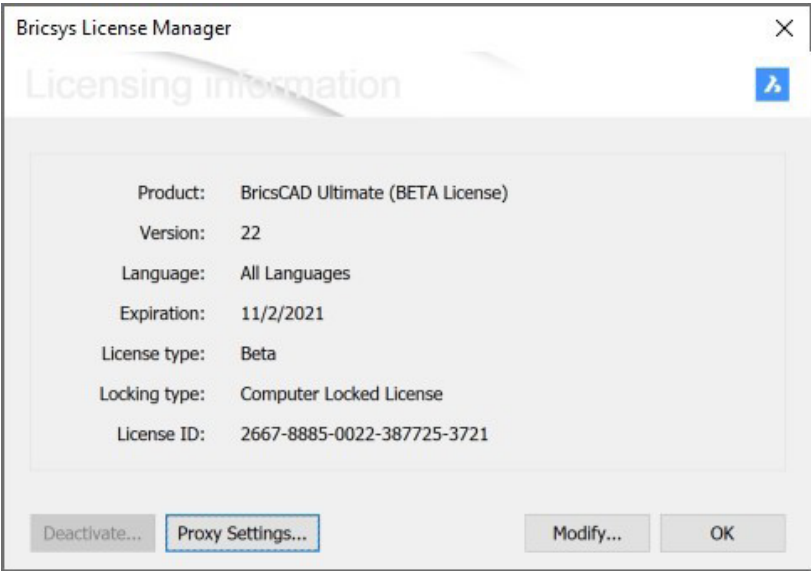
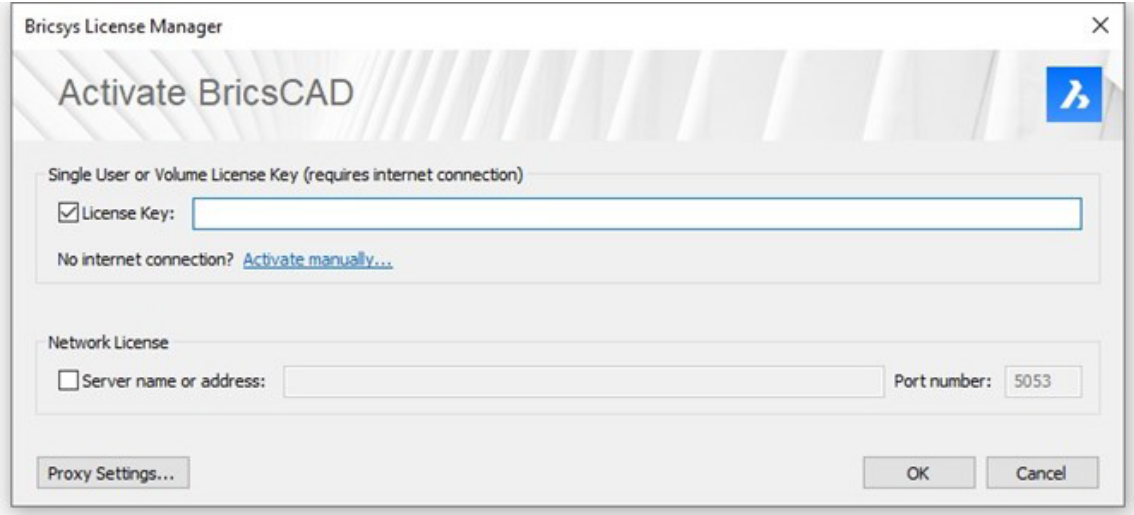


Proxy Settings

Some computers are connected to a network or the internet via a proxy server. Therefore, the proxy settings should be configured before activating or deactivating a license.

Configuring the Proxy Settings

1. Click the **Proxy Settings...** button in the **Activate BricsCAD** or the **Licensing Information** dialog box.



The **Proxy** dialog box opens.



2. Complete the necessary fields in the **Proxy** dialog box.

Bricsys License Manager

Proxy

Configure Proxy Server

Host Name: Port number:

☐ Username: Password:

OK Cancel

3. Click the **OK** button to continue.

The proxy settings configuration remains active for the current **BricsCAD®** session only. If you need to reactivate or deactivate a license in a future session, you will have to reconfigure the proxy settings.

[Configuring the Proxy Settings permanently for Network License use](#)

If you use a network license, BricsCAD needs to connect to the license server each time a session is opened. Therefore, the proxy settings should be configured permanently.

Proceed as follows on the computer where BricsCAD is running:

1. Create the **HTTP_PROXY** system variable:
HTTP_PROXY=[LicenseServer]:[PortNumber]
2. (Optional) If the proxy server supports basic authentication, create the **HTTP_PROXY_CREDENTIALS** variable:
HTTP_PROXY_CREDENTIALS=[UserName]:[Password]

[Proxy server](#)

If a proxy server exists between BricsCAD and the License Server, proxy settings should be configured in BricsCAD.

See how to [configure the proxy settings permanently for Network License use.](#)



Network License Server

To make a network license available in BricsCAD on a client computer, the network administrator needs to install a network license server from Reprise Software first.

Bricsys Network License Manager is a separate program that installs the server. After starting the network license server, you can configure it through a web interface.

Just like BricsCAD needs a license file to run, the network license server needs a network license file that you can activate online or manually.

You can activate a network license only once and it is locked to the server.

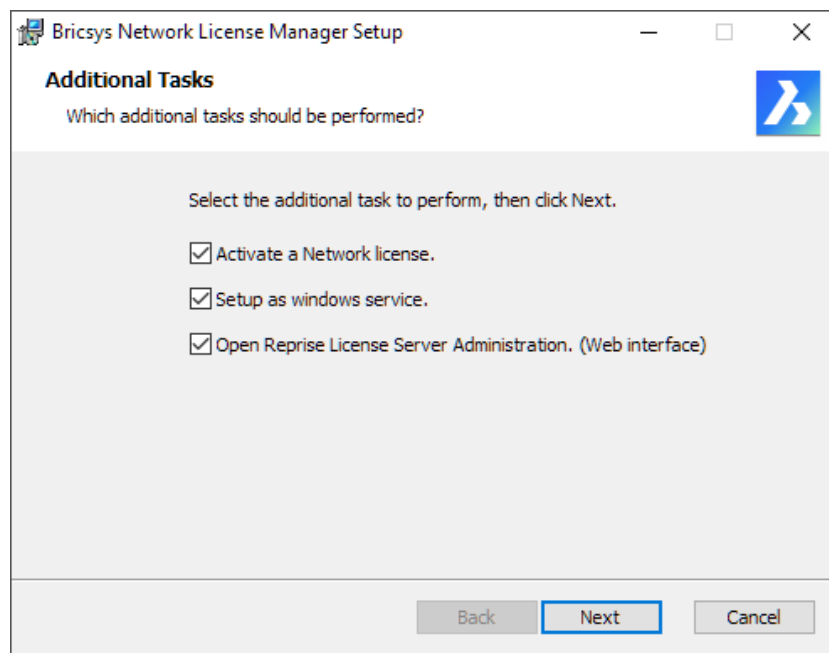
Once the network license is activated and the server is started, you can use the network license in BricsCAD on a client computer.

Note: Reprise Software doesn't offer a network license server for Mac computers. However, you can install a Windows or Linux network license server to serve licenses on Mac client computers.

Setting up a Windows Network License Server

Installing the Bricsys Network License Manager

1. [Download Bricsys Network License Manager \(Windows\)](#)
2. Double-click the installation MSI file to start the installation.
3. Accept the terms of the End User License Agreement.
4. Accept the Destination folder or click Change... to change the destination folder.
5. Click the Install button.
6. Select the checkboxes next to the Additional Tasks that should be performed after the installation.



- **Activate a Network license**
After the installation, the Bricsys Network License Manager opens and asks you to activate a network license. You can open the Bricsys Network License Manager later by clicking the License activation shortcut in the Start menu.
- **Setup as Windows service**
Each time you start Windows, the license server is automatically started as a service. You can do this later with the following command in the elevated command prompt: `rlm.exe-dlog rlm.log-install_service`.



- **Open Reprise License Server Administration (Web interface)**
After the installation, the Reprise License Server Administration web interface opens. It allows you to manage the network license. You can open the Reprise License Server Administration later by clicking the License Server Administration shortcut in the Start menu.

7. Click Next.

[New Installation of the Bricsys Network License Manager](#)

In the **Additional Tasks** dialog, make sure to select all the checkboxes (see image above).

[Upgrading the Bricsys Network License Manager](#)

1. Download and install the Bricsys Network License Manager on the computer used as network license server.
2. Make sure to deselect all the check boxes next to the **Additional Tasks**.
3. The installation restarts the license server.

[Installation from the Command Line](#)

You can also start the Network License Manager from a command window.

By default, the options **Activate a Network license**, **Setup as Windows service**, and **Open Reprise License Server Administration** (Web interface) are disabled when installing via the command line. To enable these options, use the respective parameters `ACTIVATELICENSE`, `INSTALLSERVICE`, and `OPENWEBINTERFACE`.

For example, `msiexec /qb /i Bricsys-NetworkLicenseManager.msi ACTIVATELICENSE=1 INSTALLSERVICE=1` will show the activation dialog and install it as a service without showing the web interface.

- For more options, type: `msiexec /?` at the command prompt.
- On the Microsoft website, you can find [more information](#) about the `msiexec` command.

[Starting the Network License Server](#)

The Network license server is automatically started/restarted after the installation. To check if the server has started, open Windows Services and check if the service **RLM** is running. If needed, you can manually start/stop/restart the service.

You can configure the server via the [Network License Server Administration](#).

Once the Network license is activated and the server is started, the server is ready to serve licenses. It is now possible to [use the Network license in BricsCAD on a client computer](#).



Network License Server Administration

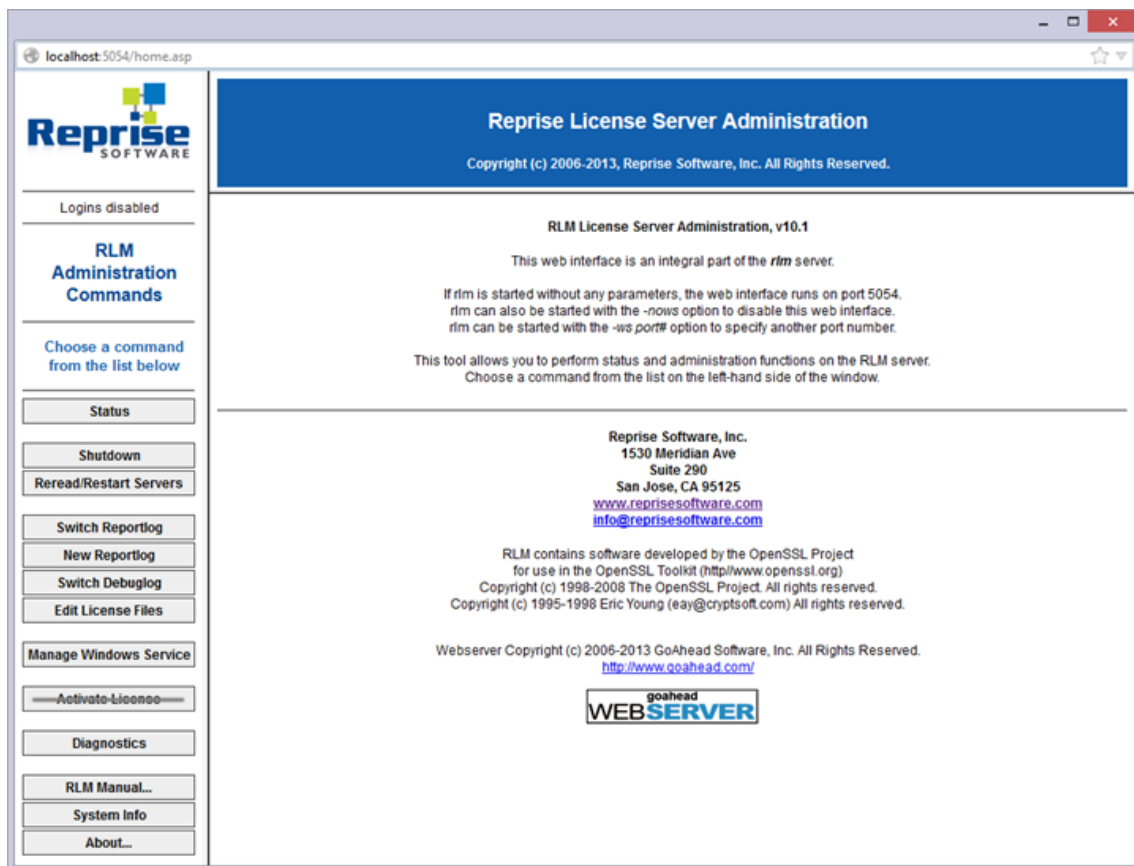
When the Network license server (also named RLM License server) is running, you can configure it in the Reprise License Server Administration web interface.

Opening the Web Interface

1. If the network license server is not running, click the **License Server** shortcut in the Start menu (on Windows Vista or higher: right-click > Run as administrator). A console window opens.
2. Open a web browser.

Go to **<http://localhost:5054>**

The **Reprise License Server Administration** web interface opens.



- Do not use the **Activate License** button!
- To get an overview of all options, click the **RLM Manual...** button on the left or go to the [RLM License Administration Manual](#).



Checking the License and Server Status

You can check the status of all network licenses on the server.

1. Click the **Status** button on the left.
The page **Status for «rlm» on [LicenseServer] (port 5053)** opens.

localhost:5054/home.asp

Reprise License Server Administration

Copyright (c) 2006-2015, Reprise Software, Inc. All Rights Reserved.

Status for "rlm" on LicenseServer (port 5053)

RLM software version	v12.2 (build.2)
RLM comm version	v1.2
debug log file	rlm.log
license files	Bricsys.lic

rlm Statistics	Since Start	Since Midnight	Recent
Start time	12/04 13:01:44	12/04 13:01:45	12/04 13:01:45
Messages	0 (0/sec)	0 (0/sec)	0 (0/sec)
Connections	0 (0/sec)	0 (0/sec)	0 (0/sec)

EDIT rlm Options

SHOW rlm Debug Log

ISV Servers												
Name	port	Running	Restarts	Server Status	License Usage	Debug Log	REREAD	OPTIONS	TRANSFER	SHUTDOWN	ACTIVATE	
bricsys	63063	Yes	0	bricsys	bricsys	bricsys	bricsys	bricsys	bricsys	bricsys	bricsys	

2. Click the bricsys button in the Server Status column of the ISV Servers table to view the status of the Bricsys Network license.



Rereading the License / Restarting the Server

After activating a network license while the server was running, you have to reread the license / restart the server.

1. Click the **Reread/Restart Servers** button on the left.

localhost:5054/home.asp

localhost:5054/home.asp

Reprise SOFTWARE

Logins disabled

RLM Administration Commands

Choose a command from the list below

Status

Shutdown

Reread/Restart Servers

Switch Reportlog

New Reportlog

Switch Debuglog

Edit License Files

«Activate License»

Diagnostics

RLM Manual...

System Info

About...

Reprise License Server Administration

Copyright (c) 2006-2015, Reprise Software, Inc. All Rights Reserved.

ISV bricsys status on LicenseServer (port 5053)

bricsys software version	v12.2 (build:2)
bricsys comm version	v1.2
debug log file	bricsys.dlog
report log file	_n/a_

bricsys Statistics	Since Start	Since Midnight	Recent
Start Time	12/04 13:01:45	12/04 13:01:46	12/04 13:01:46
Messages	5 (0/sec)	5 (0/sec)	5 (0/sec)
Connections	2 (0/sec)	2 (0/sec)	2 (0/sec)
Checkouts	0 (0/sec)	0 (0/sec)	0 (0/sec)
Denials	0 (0/sec)	0 (0/sec)	0 (0/sec)
License Removals	0 (0/sec)	0 (0/sec)	0 (0/sec)
Current Connections	0		

Enter license password to select license results. Only licenses with matching passwords (or with no passwords) will be displayed above.

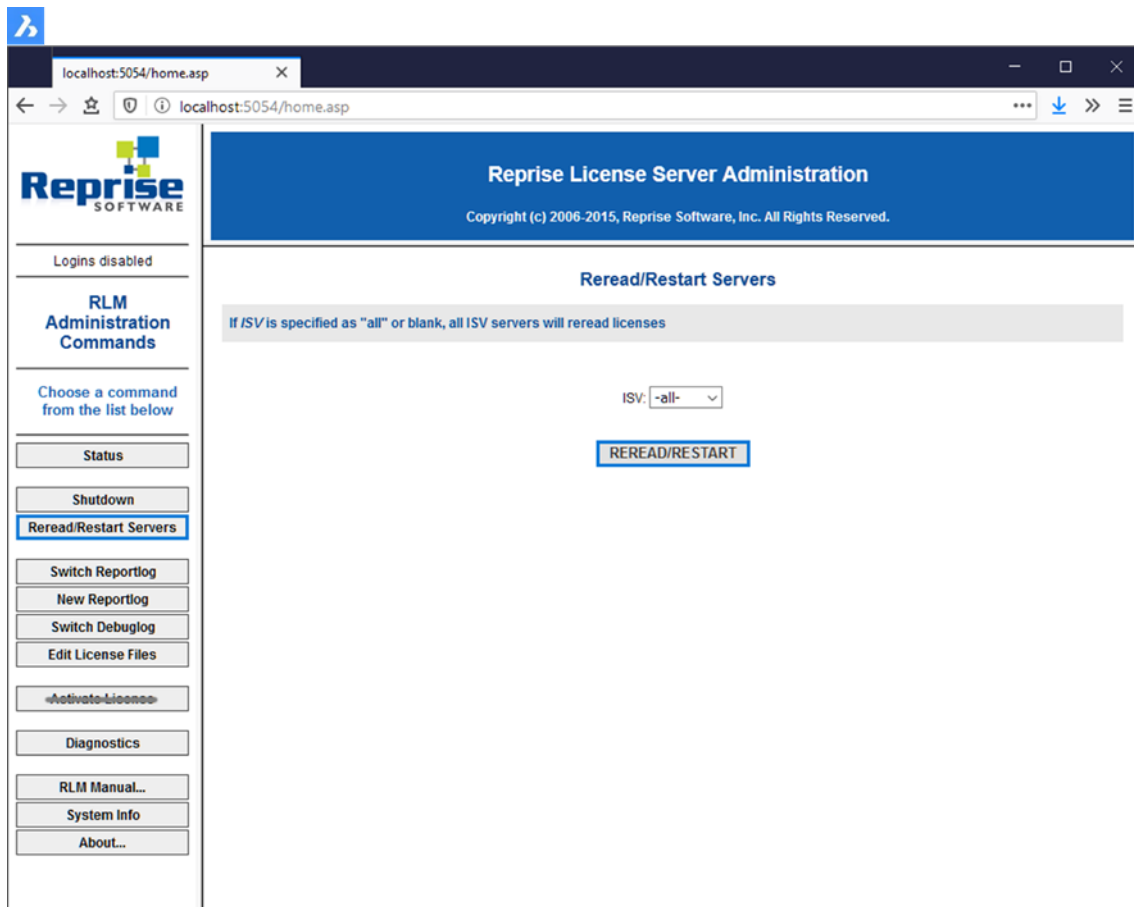
License Password:

Refresh

BACK



2. Click the **Reread/Restart Servers** button. The server restarts and rereads the Network license.



Creating the Failover License File

Creating a failover license file begins with a regular single-server set up, completing the activation of the network license, and also installing and configuring Reprise License Manager on the backup license server without activation.

BricsCAD would need the following to create the failover license:

- IP address of the primary server
- IP address of the backup server
- Host ID of the primary server
- Host ID of the backup server

Once the data is sent to BricsCAD, BricsCAD can create a failover.lic – This failover.lic needs to be placed on the backup license server, together with the Bricsys.lic that got generated during activation on the primary license server.

Firewall rules also need to be put in place so the failover and primary can communicate (port 5053 and 5054 need to be accessible)

At the client-side, BricsCAD will provide a custom license file that describes the hostname and port of the failover server, so BricsCAD can fall back on that in case the primary isn't accessible.



License Pooling

Editing the Options

The options can be edited in 2 ways:

- in the bricsys.opt file, located in the Network License Manager installation folder.
- on the webinterface of the Network License Manager.
 - Browse to <http://localhost:5054> on the license server.
 - Click «Status» in the menu on the left side.
 - Click «bricsys» in the OPTIONS column for the bricsys ISV row.

Once edited, Reread/Restart the license server.

Commonly Used Options

Groups can be used to define a list of usernames, hostnames, or IP-addresses. The name can later be used to apply rules for that group.

GROUP

Defines a group of usernames.

Syntax:

GROUP name list-of-usernames

Example:

GROUP engineers userA userB userC

HOST_GROUP

Defines a group of hostnames.

Syntax:

HOST_GROUP name list-of-hostnames

Example:

HOST_GROUP firstFloor machineA machineB machineC

INTERNET_GROUP

Defines a group of IP-addresses.

Syntax:

INTERNET_GROUP name list-of-ip-addresses

Example:

INTERNET_GROUP networkGhent 192.168.1.* 192.168.2.*

The wildcard character (*) can be used in IP addresses.

RESERVE

Reserve a number of licenses to a specific (group of) user(s). Syntax:

RESERVE num product user|host|group|host_group|internet|internet_group|project who [id=nnn] Example:

RESERVE 20 bricscad GROUP engineers

MAX

Limit the number of licenses available to a specific (group of) user(s). Syntax:

MAX num product user|host|group|host_group|internet|internet_group|project who [id=nnn] Example:

MAX 5 bricscad HOST_GROUP firstFloor

INCLUDE

Only allow licenses for a product to a specific (group of) user(s). Anyone not specified by the INCLUDE line is not allowed to use the product.

Syntax:

INCLUDE product userhost|group|host_group|internet|internet_group|project who [id=nnn] Example:

INCLUDE bricscad GROUP bricscadusers



EXCLUDE

Disallow licenses for a product to a specific (group of) user(s).

Syntax:

EXCLUDE product user|host|group|host_group|internet|internet_group|project who [id=nnn] Example:

EXCLUDE bricscad INTERNET_GROUP 1.1.*.*

More options can be found in the RLM enduser manual under the paragraph «The ISV Options File»

Identifying The License File

Since V15, a new feature in the Reprise license manager allows you to add a '_id' field in your license file. With this '_id' you can identify each license file as a separate license pool.

When specifying a [id=nnn] parameter for an added OPTION, that OPTION will only affect the corresponding license file.

Usage Example: You have 2 licenses, one with 10 seats for BricsCAD Lite, and one with 10 seats for BricsCAD Pro, and want to specify which users can use which level.

THE LICENSE FILES

Example: Lite License

HOST host_name ethernet_mac 5053 ISV bricsys

LICENSE bricsys bricscad 15 permanent 10 share=uh contract=1 options="LA:xx_XX TY:FCO LE:PRO"

_ck=6a06665467 sig=""

HOST host_name ethernet_mac 5053 ISV bricsys

LICENSE bricsys bricscad 15 permanent 10 share=uh contract=1 options="LA:xx_XX TY:FCO LE:PRO" _id=1

_ck=6a06665467 sig=""

Example: Pro License

HOST host_name ethernet_mac 5053 ISV bricsys

LICENSE bricsys bricscad 15 permanent 10 share=uh contract=1 options="LA:xx_XX TY:FCO LE:PLA"

_ck=6a06665467 sig=""

HOST host_name ethernet_mac 5053 ISV bricsys

LICENSE bricsys bricscad 15 permanent 10 share=uh contract=1 options="LA:xx_XX TY:FCO LE:PLA" _id=2

_ck=6a06665467 sig=""

Now the Lite license is defined by id=1, and the Pro license by id=2.

THE OPTIONS

If now, for example, you would like to only allow engineers in your firm to use the Pro version, this can be done by adding the following to the options.

GROUP engineers userA userB userC

INCLUDE bricscad GROUP engineers id=2

More informations: http://www.reprisesoftware.com/RLM_Enduser.html



License Pooling by RLM_PROJECT

The following applies to cases where multiple level network licenses are activated on the same RLM server, so the users can decide what license level to acquire when activating BricsCAD.

The user can obtain a specific BricsCAD license level, based on the RLM_PROJECT environment variable which should match the ISV server options. The license seats will be reserved on the ISV server for the specific PROJECT users by an Identifier.

Note: Please be aware that the following actions are to be executed by an IT department person.

1. RLM server actions

1. Add _id=<number> identifier to license files, just before the _ck=xxxxxxx string:
.....contract=999-9999-9999-8888 options="LA:xx_XX TY:NFR LE:PRO _id=1 _ck=4b07efdd90....
.....contract=999-9999-9999-9999 options="LA:xx_XX TY:NFR LE:LIT _id=2 _ck=4b07efdd90.....
2. Add RESERVE option for PROJECTs and license IDs to ISV server, for all the seats of the licenses: RESERVE 5 bricscad PROJECT bc_pro id=1
RESERVE 5 bricscad PROJECT bc_lite id=2

2. BricsCAD user actions

1. Create a script that SETs a temporary environment variable RLM_PROJECT on the user machine, which will allow BricsCAD to negotiate with the RLM server the PROJECT license pool.
2. Executing a specific script will allow BricsCAD to pull the desired license level It can be *.CMD (command prompt) files:
 - @echo off
set RLM_PROJECT=bc_lite
call "C:\Program Files\Bricsys\BricsCAD V21 en_US\bricscad.exe"
 - @echo off
set RLM_PROJECT=bc_pro
call "C:\Program Files\Bricsys\BricsCAD V21 en_US\bricscad.exe"
 - or *.PS1 (powershell) files:
\$env:RLM_PROJECT = "bc_pro"
Start-Process -FilePath "C:\Program Files\Bricsys\BricsCAD V21 en_US\bricscad.exe"
 - \$env:RLM_PROJECT = "bc_lite"
Start-Process -FilePath "C:\Program Files\Bricsys\BricsCAD V21 en_US\bricscad.exe"

Since all license seats are RESERVED in the RLM options, BricsCAD will not be able to acquire a license when the RLM_PROJECT variable does not exist, or when it has a value that does not match the ISV server options.

Raising the available seats above 5 or lowering the RESERVE count below 5 would let some licenses be available freely.

The RLM_PROJECT also works with the other (EXCLUDE/INCLUDE/...) options so a lot of configurations are possible.

Advanced Configurations

Once the network license server is set up, BricsCAD may report error -17 when trying to connect to the server. The reasons can be due to the presence of antivirus, and/or a firewall, and/or a proxy server.

Investigate other error codes: https://help.bricsys.com/document?title=licensing/error_codes_title.html

ISV bricsys port=[port number]

where [port number] must be replaced by port number copied from the ISV Servers table.



Antivirus

If antivirus software is running on the server and blocking the license server program (**rlm.exe** on Windows, **rlm** on Linux/Mac), you need to unblock the RLM service in the antivirus.

See your antivirus configuration on how to unblock services.

Firewall

If a firewall is installed between the server and BricsCAD, two port numbers need to be opened in the firewall: the port number 5053 and the port number assigned to the Bricsys license server.

This port number is dynamically assigned when the license server starts. To open this port in the firewall, it must be first set in the Bricsys.lic file on the server:

1. Open the License Server Administration web interface at **http://localhost:5054**.
2. Click the **Status** button on the left. The **Status for «rlm» on [LicenseServer] (port 5053)** page opens.
3. In the ISV Servers table, look at the bricsys row. The port number is displayed in the second column. Copy this port number.
4. Open the Bricsys.lic file in a text editor (Notepad, Gedit, ...). The default location of the file is C:\Program Files (x86)\Bricsys\Bricsys Network License Manager.

You can fix the port number by modifying the line ISV bricsys in

The screenshot shows the Reprise License Server Administration web interface at localhost:5054/home.asp. The left sidebar has a 'Status' button highlighted with a red box. The main content area shows the 'Status for «rlm» on LicenseServer (port 5053)' page. In the 'ISV Servers' table, the 'bricsys' row has the port '61916' highlighted with a red box. A red arrow points from this port number to the 'Bricsys.lic - Notepad' window, which shows the line 'ISV bricsys port=61916' highlighted with a red box. The 'Bricsys.lic' file content is as follows:

```
HOST LICENSESERVER disksn=Z32TN4VTS 5053
ISV bricsys port=61916
LICENSE bricsys bricscad 14 permanent 2 platforms="x86_w x64_w"
contract=25 options="LA:en_US TY:FCO LE:PLA" _ck=69d798bf43 sig="60
Q04589N0MEY4DEVHF2YSU8FCUKYBKKCXVSPBUB8AG164EBNVHB12CU0Y9QNC0PU77H
642875NV"
```




5. In the firewall, open both numbers 5053 and the port number you added to the Bricsys.lic file.
6. Shut down and restart the License Server program.

Note: If this does not solve the problem, add the license server program (rlm.exe on Windows, rlm on Linux/Mac) as an exception onto the firewall exceptions and restart the license server again.

Roaming

With a network license, you can set a floating license to roam to a system that will subsequently be disconnected from the network. The resulting license can be used for the number of days specified when the license was set to roam. After this period, the license is checked back in automatically. If needed, you can return the roamed license to the license pool early.

The license file(s) on the network license server contain(s) a parameter max_roam_count. This is set to the total number of seats on a network license by default.

Setting up a Linux Network License Server

Download and install the Bricsys Network License Manager on the computer that will be used as the network license server.

1. [Download Bricsys Network License Manager \(Linux\)](#)
2. Extract **Bricsys-NetworkLicenseManager.tgz** to any folder (command line: tar xvf Bricsys- NetworkLicenseManager.tgz).
3. Start the application rlm in that folder (command line in that folder: ./rlm).
4. Open the web page **http://localhost:5054** in a browser.
5. Click the **System Info** button on the left of the web page. Copy an Ethernet host ID and use this to activate your license on the **My Account** page on the Bricsys website.
6. When you download a license file from the Bricsys website, store it in the folder where you extracted Bricsys-NetworkLicenseManager.tgz.
7. Click the **Reread/Restart Servers** button.
8. Click the **Status** button to see the server status, on the next page click the bricsys button in the table to view Bricsys licenses.
9. Click the **RLM Manual...** button to learn how to configure the license server in detail. Among other things, the page explains how to start rlm automatically when the server boots.

Once the Network license is activated and the server is started, the server is ready to serve licenses. It is now possible to use the Network license in BricsCAD on a client computer.

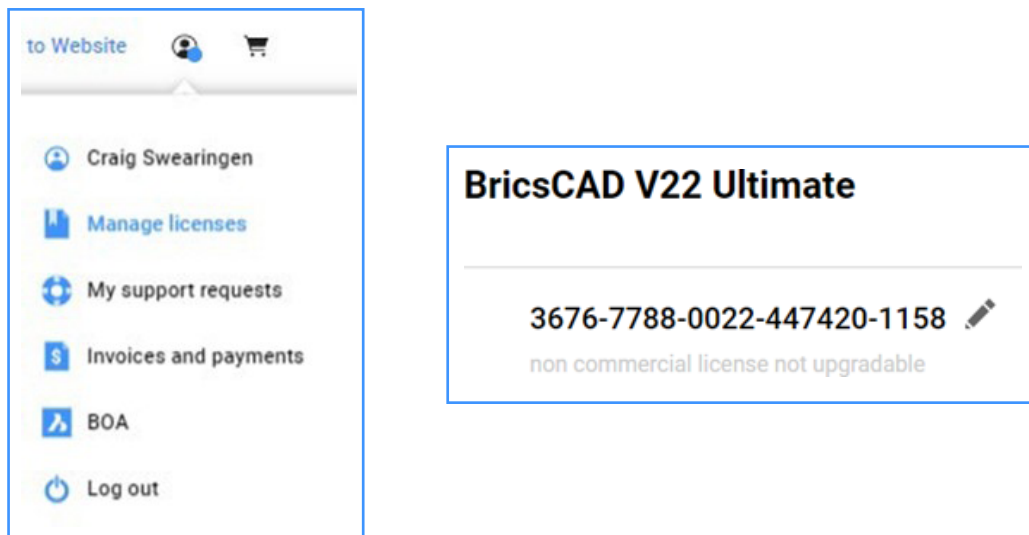


Managing BricsCAD Licenses with Multiple Bricsys Accounts

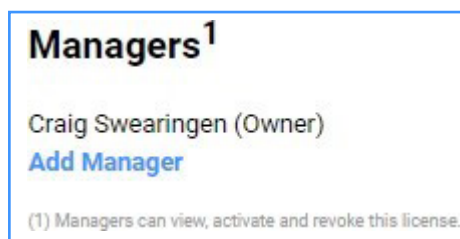
You can share licenses with one or more other Bricsys accounts to allow them to view, activate and revoke your license(s).

Do the following:

1. Log on to the [Bricsys website](#).
2. Click on your user name and select **Manage Licenses** in the drop-down menu.



3. Under **Managers**, click **Add Manager**.



4. Type the login email address* of the new manager, then click the **Plus** icon. The new manager is added. An email is sent to inform the new manager. The **X** icon after the name allows user to remove the manager.

*Managers must have a Bricsys account.



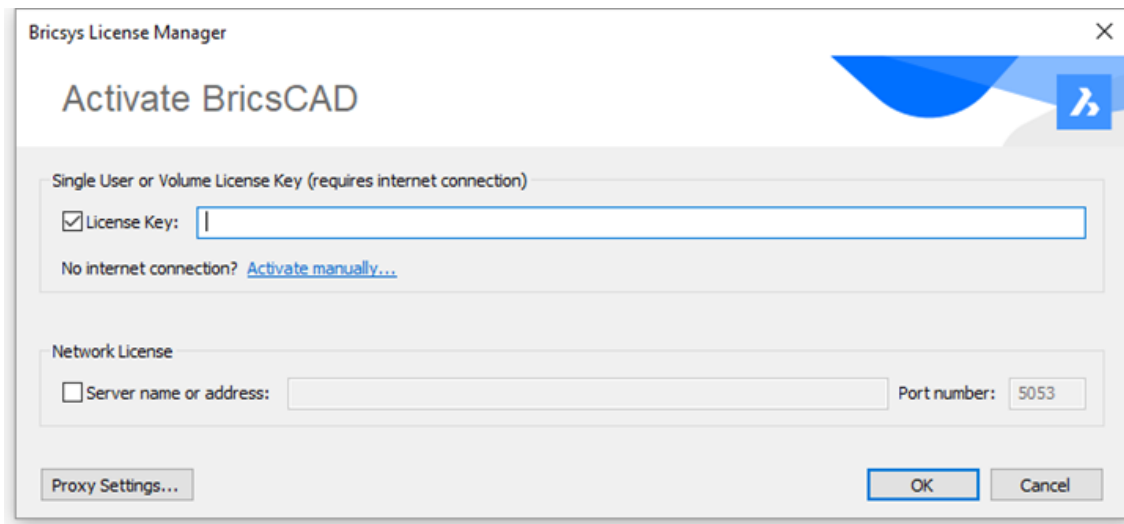
Modifying a BricsCAD License

Use this procedure to upgrade or replace a license.

1. Launch the [LICENSEMANAGER](#) command. The **Bricsys License Manager** dialog displays.
2. Click **Manage License**. The **Licensing Information** dialog displays.

Click the **Modify** button.

The **BricsCAD License Manager - Activate BricsCAD** box displays/



3. Paste your license key in the **License Key** field.
4. Click the **OK** button.
 - Your license key is registered over the internet.
 - A dialog displays when the license key is successfully activated.
5. Read the text on the dialog box and click the **I understand** button.



Deactivating or Revoking a BricsCAD License

Use this procedure to:

- Migrate a license to another computer.
- Permanently remove BricsCAD from a computer.
- Reactivate BricsCAD after installing a new hard disk, changing partitions, or upgrading the operating system.

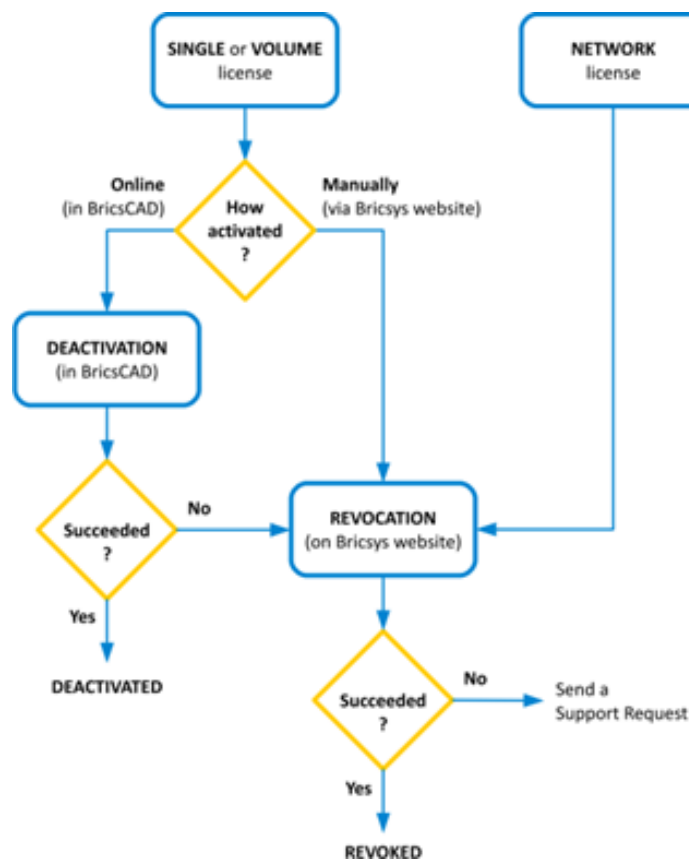
To deactivate a BricsCAD license, an internet connection is required.

You cannot manually deactivate a license via another computer that is connected to the internet.

You cannot deactivate:

- Single and volume licenses that are manually activated.
- Network licenses.
- Trial licenses.

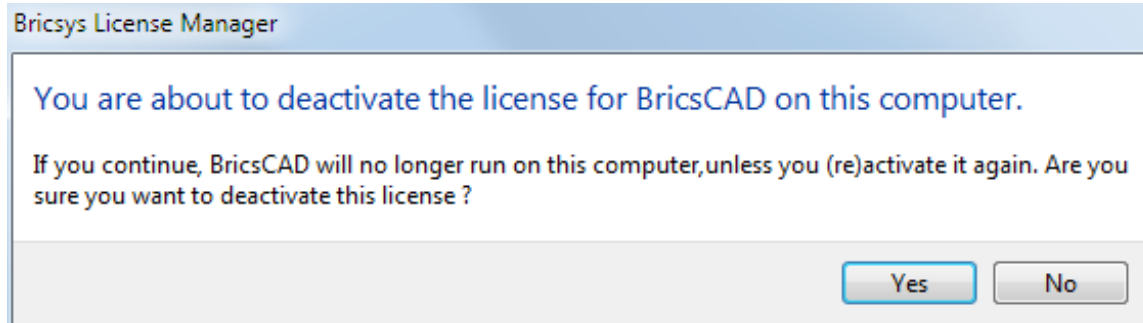
The chart below explains how you can deactivate a BricsCAD license. If it is not possible to deactivate a BricsCAD license, you can revoke the license.





Deactivating a License

1. Launch the [LicenseManager](#) command, then click the **Manage License** option on the **Bricsys License Manager** dialog box. The **Licensing Information** dialog box displays.
2. Click **Deactivate...**



3. Click the **Yes** button on the confirmation dialog box to deactivate the license.

The license is deactivated now and is available to be activated on another computer.

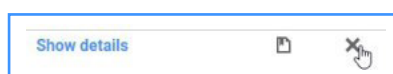
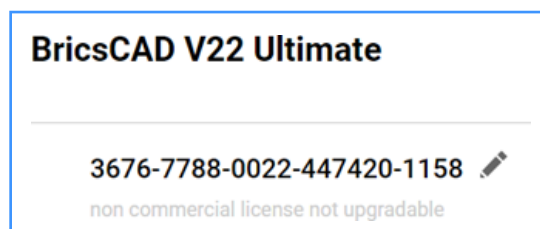
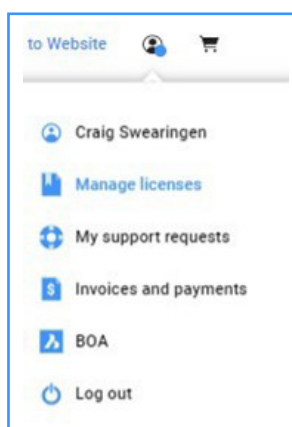
Revoking a License

Only revoke a license if deactivation is not possible.

Use this procedure to:

- Deactivate a network license or a single or volume license manually that is manually activated.
- Reactivate BricsCAD after a hard disk crash.
- Reactivate BricsCAD after installing a new hard disk, changing partitions, or upgrading the operating system.
- Migrate a license to another computer.
- Permanently remove BricsCAD from a computer.

1. Log in to the [Bricsys website](#). Make sure you log in with the Bricsys account containing your licenses.



2. Scroll down and click the **X** icon to revoke the license.



Migrating a License to Another Computer

Step 1: Deactivate the license on the old computer. See: Deactivating a license

Step 2: Launch BricsCAD on the new computer.

Step 3: Activate the license on the new computer.

Migrating a Network License to Another Server

Do the following:

1. Revoke the license.
2. Activate the license on your new server.
3. Shut down the license manager on the old server and delete the license file on the old server.

Note: The number of revocations is limited.

All your valid licenses can be found on the Bricsys website (login required):
<https://www.bricsys.com/protected/account/licenses>

Activating BricsCAD Communicator

After you have installed BricsCAD Communicator on your computer, you need to activate the software.

1. Launch the LICENSEMANAGER command. The Bricsys License Manager dialog box displays.
2. Under **Communicator for BricsCAD**, click **Manage License**. The Activate BricsCAD Communicator dialog box displays.
3. Click **Activate Now...**, then paste a valid BricsCAD Communicator license key into the License Key field.
4. Click the OK button. The license is registered over the internet. A confirmation dialog box displays.
5. Read the text on the dialog box and click the **I understand** button.

USECOMMUNICATOR system variable

Indicates that a Communicator license was activated. If the license is changed, the new level comes into effect after restarting the program.

- 0: no license, Communicator import, and export formats are not available.
- 1: trial, runs Communicator in trial mode, expiring after 30 days.
- 2: full, runs the full communicator import-export set.

Find Additional Support/Contact BricsCAD

- <https://blog.bricsys.com/migration/>
- <https://help.bricsys.com/>
- <https://www.bricsys.com/protected/support/NewSupportRequest.do>

What CAD professionals told us about migrating to BricsCAD:

"After 28 years of using AutoCAD, following a quick and easy installation, we seamlessly transitioned more than 1000 users with various years of experience to BricsCAD. The users are located around the globe, and they made the switch with no additional training required."

Lorelei Connors, CAD/Drafting Manager, Subsea 7

"First of all, BricsCAD makes it easy to transition from other CAD software. That process went very smoothly."

Technical Development Department at Nittetsu Texeng

"The transition from AutoCAD to BricsCAD is actually very easy: all commands are the same, and I can continue to use the .dwg files that I created with AutoCAD. After a morning, you will get the hang of BricsCAD."

Ben van Amersfoort, Owner Tekenbureau van Amersfoort

"The first advantage of BricsCAD is its pricing, combined with the perpetual licensing. The second big advantage is BricsCAD's high compatibility with other CAD software and the data files made with them."

Kunihiko Takemura, Technical Department General Manager, Takamiya

"A small team of two did all the preparations regarding our libraries and templates. Then we deployed BricsCAD running parallel to AutoCAD® LT to make sure we had a fallback if we needed it. When we made the migration from Windows 7 to Windows 10, we removed AutoCAD® LT and nobody ever noticed."

Steffen Lemmerz, Founding partner, SLIK Architekten

"Since there were both programs at the start of the transition, everyone could choose for themselves. After a short time, almost everyone switched over to BricsCAD.»"

Franz Dietz, CAD representative, EBB Ingenieurgesellschaft

"I'm surprised more people aren't using BricsCAD. I think that if everyone knew that they could get all the AutoCAD features they need and not have to buy subscription, then they'd switch. Plus, you save money. It's a no-brainer."

Jason Spilker, Project Engineer, Vector Structural Engineering

You are not alone, find out why more and more CAD professionals are switching to BricsCAD:

bricsys.com/en-eu/customer-cases

And have a look at the reviews on the G2 website:

g2.com/products/bricscad/reviews/bricscad-review-653216

What's next? Make the move to BricsCAD now and start reaping the benefits of more automation with AI and more flexible licensing all at a lower cost.